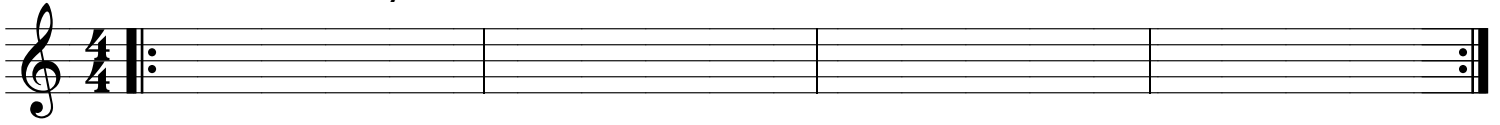


New Orleans Comphilation

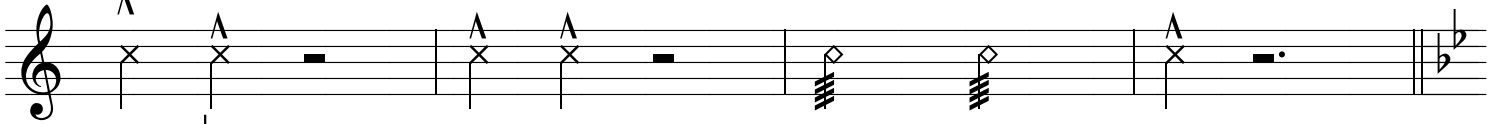
Phil Abraham

Drs intro N.O. style ad lib



A musical staff in treble clef with a 4/4 time signature. It begins with a repeat sign (double bar line with two dots) and ends with a double bar line and a repeat sign.

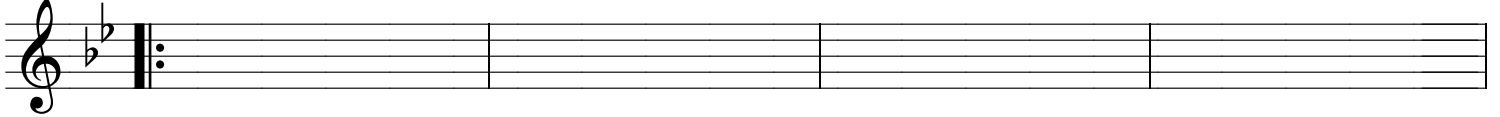
Drs cue



A musical staff in treble clef. It contains rhythmic cues: an 'x' on a quarter note, an 'x' on a quarter note, a quarter rest, an 'x' on a quarter note, an 'x' on a quarter note, a quarter rest, a quarter note with a diamond symbol, a quarter note with a diamond symbol, a quarter note with an 'x', and a quarter rest. The staff ends with a double bar line and a key signature change to B-flat major.

B \flat

D 7



A musical staff in treble clef with a key signature change to B-flat major. It begins with a repeat sign and ends with a double bar line.

G 7

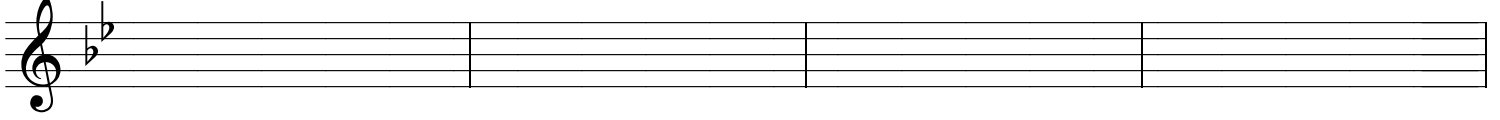
C 7



A musical staff in treble clef with a key signature change to B-flat major.

F 7

B \flat



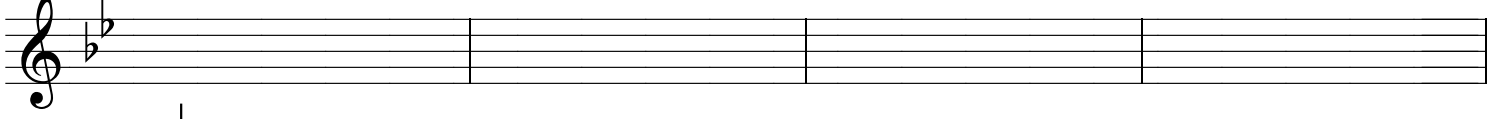
A musical staff in treble clef with a key signature change to B-flat major.

F

C 7

F

F 7



A musical staff in treble clef with a key signature change to B-flat major.

B \flat

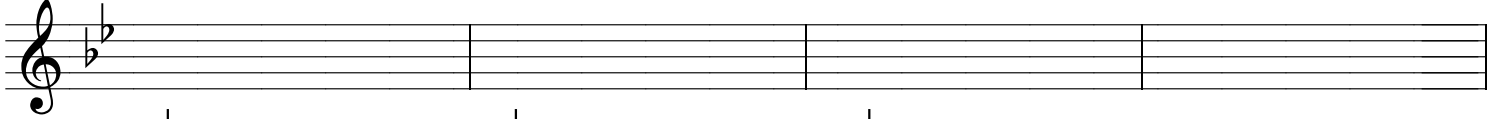
D 7



A musical staff in treble clef with a key signature change to B-flat major.

G 7

C m



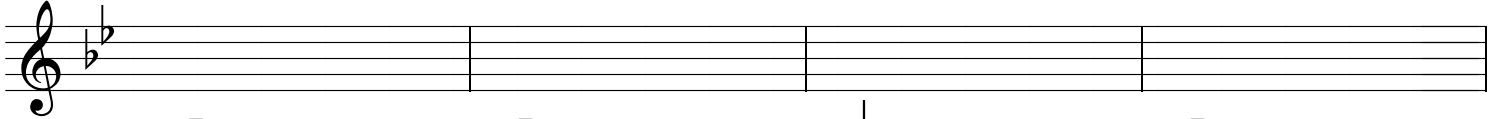
A musical staff in treble clef with a key signature change to B-flat major.

E \flat

E $\flat m$

B \flat

G 7



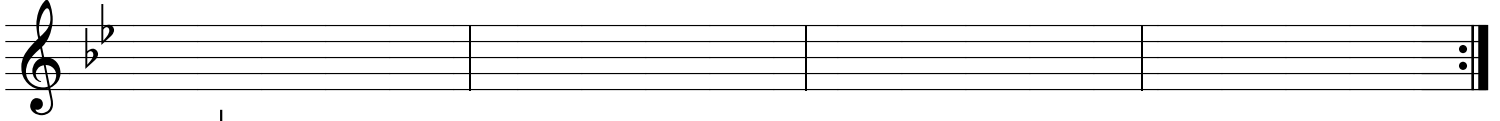
A musical staff in treble clef with a key signature change to B-flat major.

C m^7

F 7

B \flat

F 7



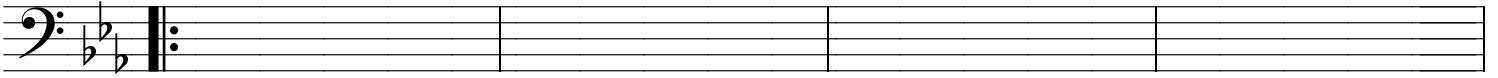
A musical staff in treble clef with a key signature change to B-flat major. It ends with a double bar line and a repeat sign.

On cue B \flat^7

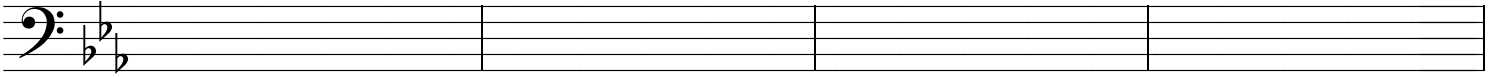


A musical staff in treble clef with a key signature change to B-flat major. It contains rhythmic cues: a quarter note with a diamond symbol, a quarter note with a diamond symbol, a quarter note with a diamond symbol, and a quarter note with an 'x'. A bass clef is positioned below the staff, with the word 'bass' written above it. The staff ends with a double bar line and a key signature change to B-flat major.

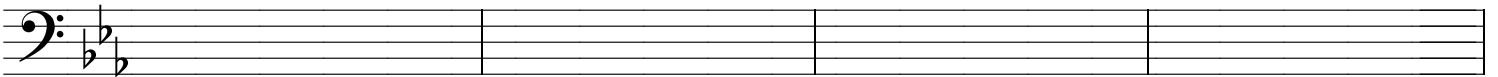
E^b Fm⁷ F[#]dim E^b E^b7



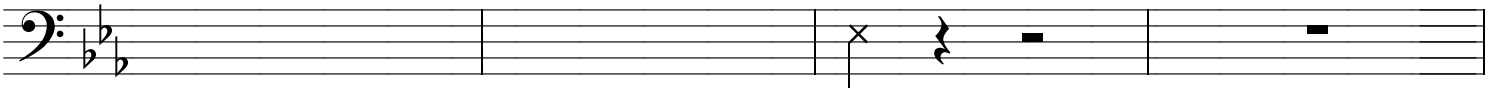
A^b E^b B^b7



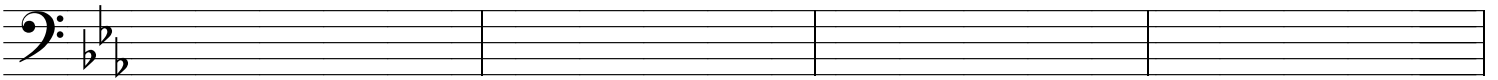
E^b Fm⁷ F[#]dim E^b C⁷



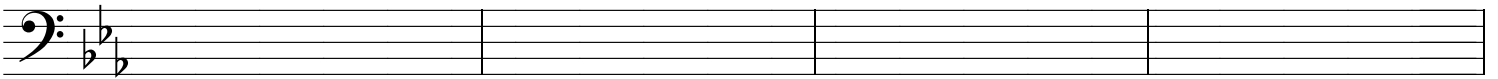
F⁷ B^b7



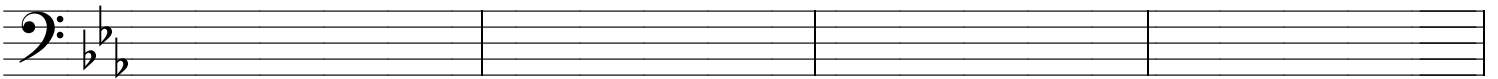
E^b Fm⁷ F[#]dim E^b E^b7



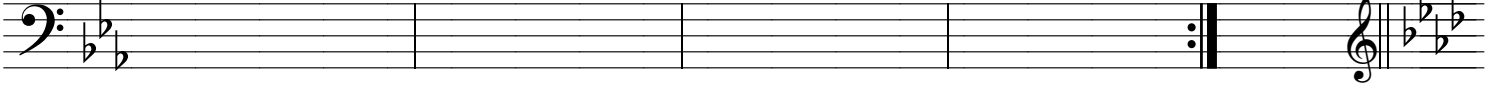
A^b G⁷



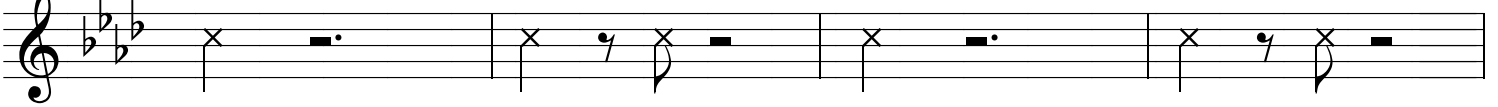
A^b7 A^{dim} E^b C⁷



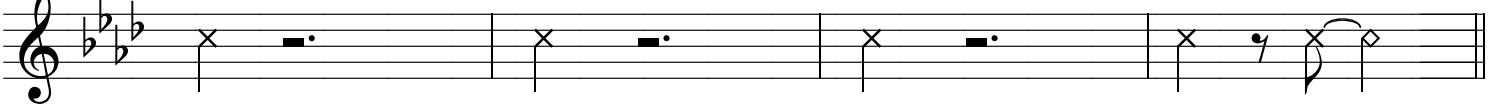
F⁷ B^b7 E^b 1.-4. B^b7 5. E^b7



On cue A^b7 A⁷



B^b7 A⁷ A^b7 A^b7 E^b7



Chord progression: A^b E^b7 A^b

Chord progression: A^b Cm $G7(b9)$ Cm E^b7

Chord progression: A^b E^b7 A^b7 $G7$ G^b7

Chord progression: $F7$ B^b7 E^b7 A^b7 E^b7

On cue drs solo

Last x $\overset{3}{\downarrow}$ $\overset{3}{\downarrow}$ $\overset{3}{\downarrow}$ $\overset{3}{\downarrow}$ $\overset{3}{\downarrow}$ $\overset{3}{\downarrow}$ $\overset{3}{\downarrow}$ $\overset{3}{\downarrow}$ $\overset{3}{\downarrow}$ $\overset{3}{\downarrow}$ $\overset{3}{\downarrow}$ $\overset{3}{\downarrow}$

Last x $\frac{1}{2}$ t°

Chord progression: B^b7 E^b7 A^b